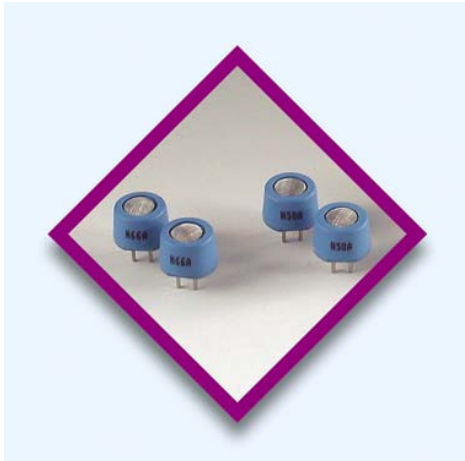


TECHNICAL INFORMATION SHEET: NAP-66A Catalytic Flammable Gas Sensors



Specifications:

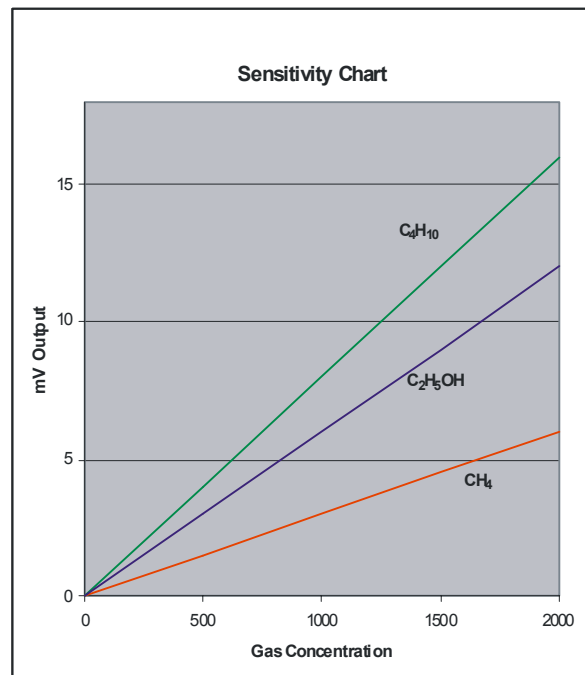
| | |
|-----------------------------------|---|
| Recommended Voltage: | 2.0V +/- 0.20V |
| Current Drawn: | 180 +/- 10mA |
| Zero Offset: | 0mV +/- 35mV |
| Sensitivity: | Typically 16 mV @2000ppm C ₄ H ₁₀ |
| Range: | 0-50% LEL |
| Repeatability: | +/- 0.5mV |
| Expected Lifetime in the field: | >5 years* |
| Response Time (T ₉₀): | 8 sec |
| Temperature Range: | -10°C to +50°C |
| Humidity: | 0-95% RH, non-condensing |

* Measured as time for output to fall below 40% of original, in a typical domestic environment

General Description:

The NAP-66A catalytic (pellistor) type flammable gas sensors supplied as matched pairs of catalytic elements mounted on a single header enclosed in a plastic housing and protected by a metal mesh. Designed as a gas sensor for use in **Domestic (Residential) Gas Detectors**, the sensor detects and measures the presence of gases such as Propane or LPG in air, in the range 0-50% of the Lower Explosive Limit (LEL) of the gas or vapour being measured. **The NAP-66A is optimised for the detection of higher hydrocarbons such as Propane and LPG, and should not be used for the detection of Methane or Natural gas**

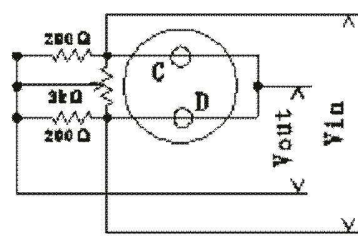
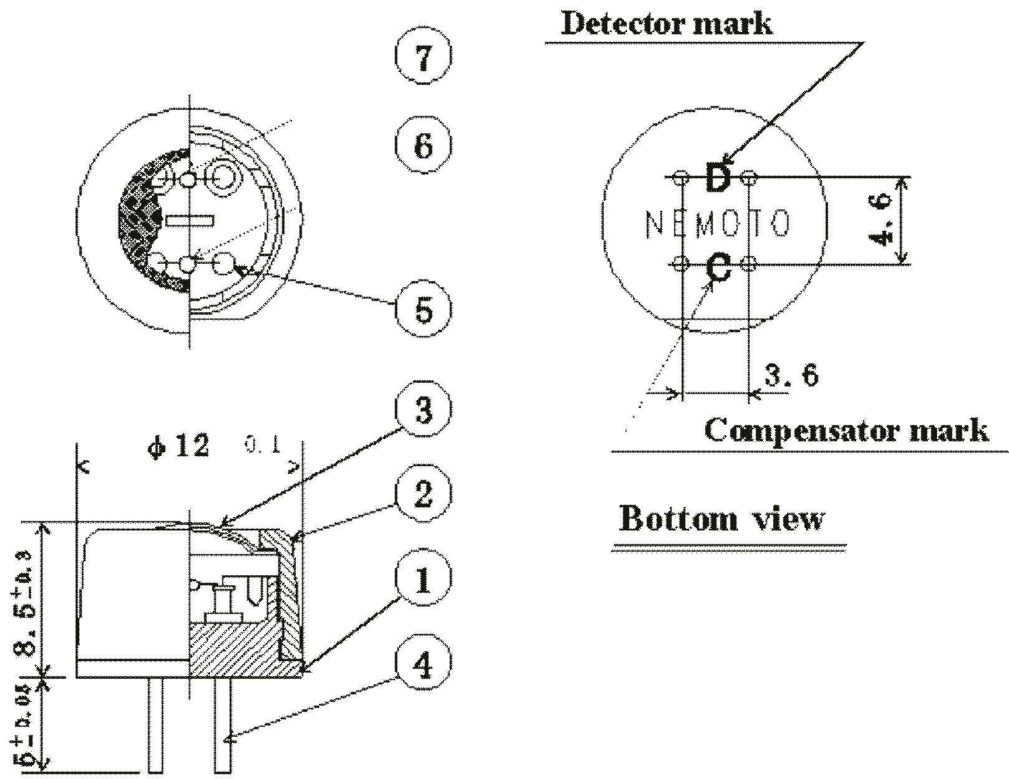
The highly advanced and efficient production techniques developed by us means that the cost of technically superior pellistor technology, usually reserved for Industrial Applications, is now appropriate low enough for them to be used for domestic gas detectors, which have hitherto tended to use less expensive, but less stable and less selective semiconductor type gas sensors.



Felcom has a policy of continuous development and improvement of its products. As such the specification for the device outlined in the data sheet may be changed without notice

ds-nap66a.doc, issue 3, May 2008

Sensor Dimensions and Circuitry:



Measuring Circuit

| No. | Parts names | Material | Remarks |
|-----|-------------|----------|---------------------|
| 1 | Mount | Nylon 66 | Glass 20% contained |
| 2 | Cap | Nylon 66 | Glass 20% contained |
| 3 | Mesh | SUS 316 | #100, Double mesh |
| 4 | Pin | Pure Ni | φ 0.8 |
| 5 | Coil | PPT | φ 30 μm |
| 6 | Compensator | | Nemopto & Co., Ltd |
| 7 | Detector | | Nemopto & Co., Ltd |

ds-nap66a.doc, issue 3, May 2008